

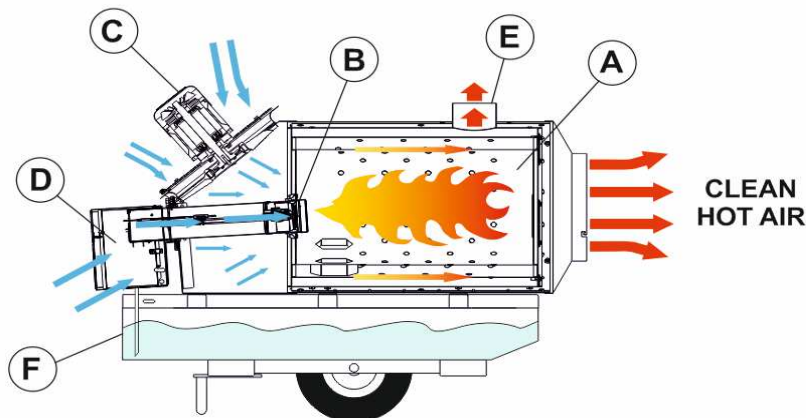
INDIRECT OIL HEATER

BV 500 13 R

230 V - 50 Hz



FUNCTIONING PRINCIPLES



- A - COMBUSTION CHAMBER
- B - NOZZLE
- C - MOTOR
- D - BURNER
- E - EXHAUST
- F - TANK

The heater burns fuel oil from 0 to 3000 meters above sea level.

The combustion chamber is in stainless steel.

The external body is cooled perfectly without wool blanket using the airflow.

BV500 has windows which allow an easy access to the heat exchanger for cleaning (see below pictures).

The heat exchanger has a specifically shape with dents to increase the efficiency (see below pictures).

Ilme connection for remote digital or mechanic thermostat.

TECHNICAL DATA (BV500 13)

Max capacity	kW/h	150	Fuel tank	l	150
Standard capacity	kW/h	135	Autonomy	h	14 - 11
Fan motor power	W	2200	Max fuel cons.	kg/h	11,45
Fan motor rpm	rpm	2750	Standard fuel consumption	kg/h	10,41
Air flow	m ³ /h	5400	Electric power Requirement	A	13-14
Static pressure (WC)	Pa	770	Voltage	V	220-240
Outlet Temp. rise	°C	90	Weight Net-Gross (Heater)	kg	144-169
Max nozzle	GPH	2.75	Weight Net-Gross (Heater+Trolley)	kg	184-214
Standard nozzle	GPH	2.50	Weight Net-Gross (Heater+Trolley+tank)	kg	224-254
Fuel supplying pressure	bar	12	Fuel type	N°1, N°2 FUEL OIL or KEROSENE	
Air outlet 2 way	in	300	DIMENSIONS		
Air outlet 1 way	in	400	Dimensions packaging	mm	1500x690x1070
Ductability	m	100	Dimensions BV500 (+ trolley)	mm	2140x890x1200

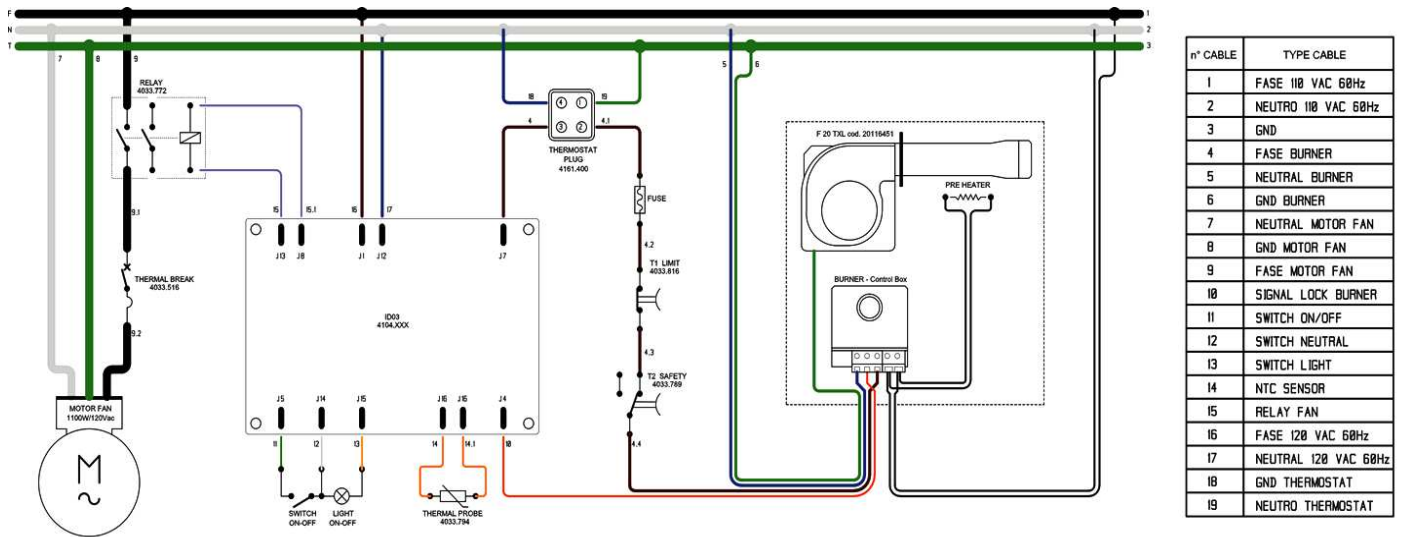
COMPONENTS

Burner	Riello F20 TXL - ONE STAGE
Nozzle	2.50 GPH (optional 2.25 and 2.75 GPH) - Type S
Igniter	Electrodes
Fuel filter	100 µm + water separator
Motor	2200 W - 230 V / 50 Hz - Three-phases

ACCESSORIES

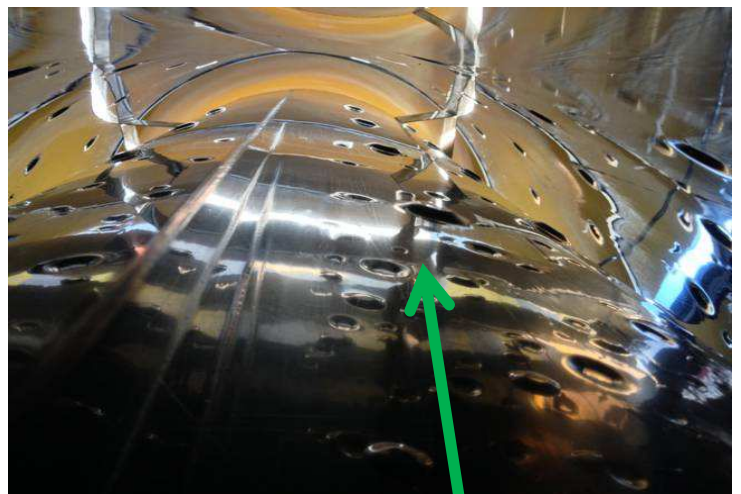
Room thermostat	Thermostat TH5
Room thermostat	Digital thermostat THD
Trolley + Tank	Available
Swivel wheels	Available
Hose	400 mm x 7,5 m
Hose	300 mm x 7,5 m

WIRING DIAGRAM



COMBUSTION CHAMBER VIEWS

Access for cleaning



Dents for efficiency